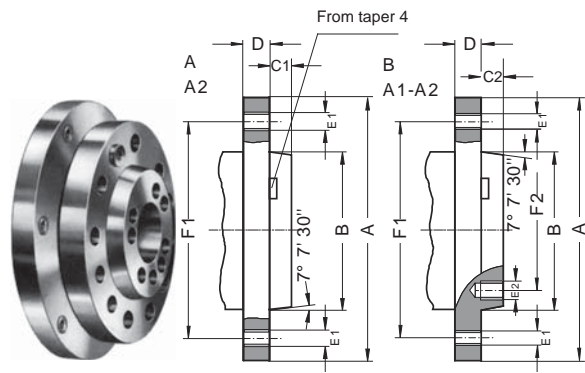


DIN 55026 Type A Type B - ISO 702/I Type A2 Type A1-A2

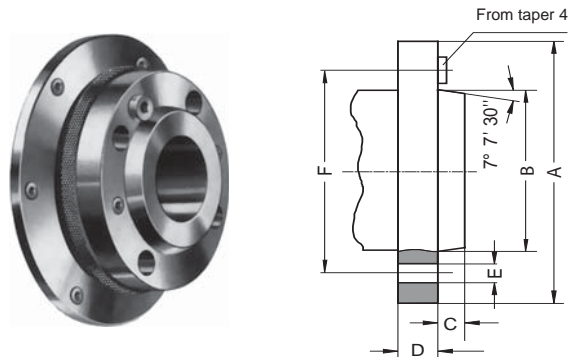


Spindle nose size	A	B max	C1	C2	D	E1	F1	E2	F2
3	92	53.983	11	-	16	3xM10	70.6	-	-
4	108	63.521	11	-	20	11xM10	82.6	-	-
5	133	82.573	13	14.288	22	11xM10	104.8	8xM10	61.9
6	165	106.385	14	15.875	25	11xM12	133.4	8xM12	82.6
8	210	139.731	16	17.462	28	11xM16	171.4	8xM16	111.1
11	280	196.883	18	19.05	35	11xM20 (11xM18)	235	8xM20 (8xM18)	165.1
15	380	285.791	19	20.638	42	12xM24 (12xM22)	330,2	11xM24 (11xM22)	247.6
20	520	412.795	21	22.225	48	12xM24	463,6	11xM24	368,3
28	725	584.248	24	25.400	56	12xM30	647.6	11xM30	530.2

Type A: Tapped holes in flange (outer bolt circle) without inner bolt circle.
Type B: Tapped holes in flange (outer bolt circle) and in inner bolt circle.

Dimensions in brackets according to ISO 702/I.

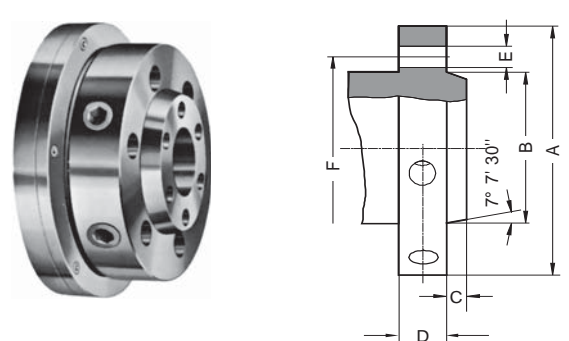
DIN 55027 & ISO 702/III



WITH BAYONET RING FIXING

Spindle nose size	A	B max	C	D	E	F
3	102	53.983	11	16	3x21	75
4	112	63.521	11	20	3x21	85
5	135	82.573	13	22	4x21	104.8
6	170	106.385	14	25	4x23	133.4
8	220	139.731	16	28	4x29	171.4
11	290	196.883	18	35	6x36	235
15	400	285.791	19	42	6x43	330.2
20	540	412.795	21	48	6x43	463.6

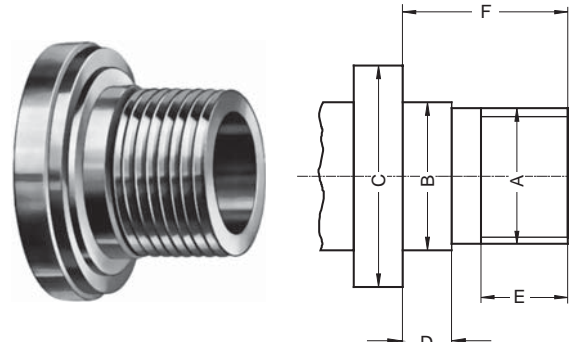
DIN 55029, ANSI B 5.9 & ISO 702/II



CAMLOCK FIXING

Spindle nose size	A	B max	C	D	E	F
3	92	53.983	11	32	3x15.1	70.6
4	117	63.521	11	34	3x16.7	82.6
5	146	82.573	13	38	6x19.8	104.8
6	181	106.385	14	45	6x23	133.4
8	225	139.731	16	50	6x26.2	171.4
11	298	196.883	18	60	6x31	235
15	403	285.791	19	70	6x35.7	330.2
20	546	412.795	21	82	6x42.1	463.6

DIN 800

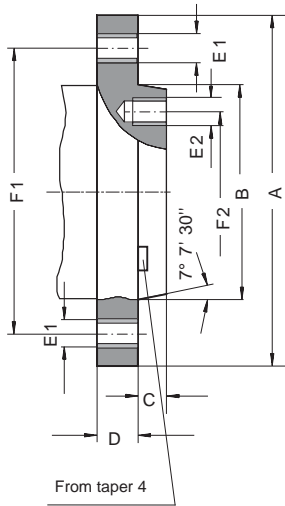


WITH THREAD

A	Bg5	C min	D	E	F
M 20	21	30	6.3	10	20
M 24	25	36	8	12	24
M 33	34	50	9	14	30
M 39	40	56	10	16	35
M 45	46	67	11	18	40
M 52	55	80	12	20	45
M 60	62	90	14	22	50
M 76x6	78	112	16	30	63
M 105x6	106	150	20	40	80

Last edition of relevant DIN standard applies in each case

TYPE A1 - A2



		A1							
Spindle nose size	A	B max	C -0,025	D	E1	F1	E2	F2	
5	133.4	82.575	14.288	22.2	11x7/16-14 UNC	104.8	8x7/16-14 UNC	61.9	
6	165.1	106.390	15.875	25.4	11x1/2-13 UNC	133.4	8x1/2-13 UNC	82.6	
8	209.5	139.735	17.462	28.6	11x5/8-11 UNC	171.4	8x5/8-11 UNC	111.1	
11	279.4	196.885	19.05	34.9	11x3/4-10 UNC	235	8x3/4-10 UNC	165.1	
15	381	285.8	20.638	41.3	12x7/8-9 UNC	330.2	11x7/8-9 UNC	247.6	
20	520	412.8	22.225	47.6	12x1-8 UNC	463.6	11x1-8 UNC	368.3	

Type A: Tapped holes in flange (outer bolt circle) without inner bolt circle.

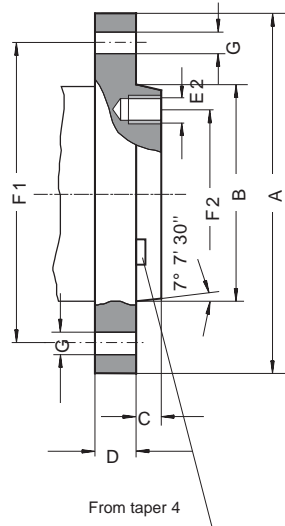
A2

Spindle nose size	A	B max	C	D	E1	F1
3	92.1	53.985	11.1	15.9	3x7/16-14 UNC	70.66
4	108	63.525	11.1	19	11x7/16-14 UNC	82.55
5	133.4	82.575	12.7	22.2	11x7/16-14 UNC	104.8
6	165.1	106.390	14.3	25.4	11x1/2-13 UNC	133.4
8	209.5	139.735	15.9	28.6	11x5/8-11 UNC	171.4
11	279.4	196.885	17.5	34.9	11x3/4-10 UNC	235
15	381	285.8	19	41.3	12x7/8-9 UNC	330.2
20	520	412.8	20.6	47.6	12x1-8 UNC	463.6

Type A1-A2 correspond ISO 702/l.

Tapped holes in flange (outer bolt circle) without inner bolt circle.

TYPE B1 - B2



		B1							
Spindle nose size	A	B max	C -0,025	D	G	F1	E2	F2	
5	133.4	82.575	14.288	22.2	11x11.9	104.8	8x7/16-14 UNC	61.9	
6	165.1	106.390	15.875	25.4	11x13.5	133.4	8x1/2-13 UNC	82.6	
8	209.5	139.735	17.462	28.6	11x16.7	171.4	8x5/8-11 UNC	111.1	
11	279.4	196.885	19.05	34.9	11x20.2	235	8x3/4-10 UNC	165.1	
15	381	285.8	20.638	41.3	12x23.4	330.2	11x7/8-9 UNC	247.6	
20	520	412.8	22.225	47.6	12x26.6	463.6	11x1-8 UNC	368.3	

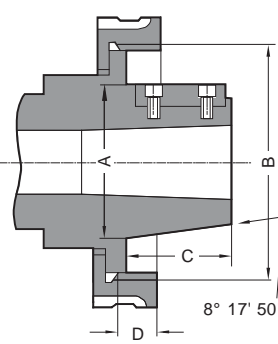
Through-holes in flange (outer bolt circle) tapped holes in inner bolt circle. From taper size 4 with driver.

B2

Spindle nose size	A	B max	C	D	G	F1
3	92.1	53.985	11.1	15.9	3x11.9	70.66
4	108	63.525	11.1	19	11x11.9	82.55
5	133.4	82.575	12.7	22.2	11x11.9	104.8
6	165.1	106.390	14.3	25.4	11x13.5	133.4
8	209.5	139.735	15.9	28.6	11x16.7	171.4
11	279.4	196.885	17.5	34.9	11x20.2	235
15	381	285.8	19	41.3	12x23.2	330.2
20	520	412.8	20.6	47.6	12x26.6	463.6

Through-holes in flange (outer bolt circle) without inner bolt circle.

TYPE L



LONG TAPER

Spindle nose size	A+0.051	B	C	D	Driving key
L00	69.850	3 3/4-6 UNS	50.800	14.288	⊔ 9.525x38.1
L0	82.550	4 1/2-6 UNS	60.325	15.875	⊔ 9.525x44.45
L1	104.775	6-6 UNS	73.025	19.050	⊔ 15.875x60.32
L2	133.350	7 3/4-5 UNS	85.725	25.400	⊔ 19.05x73.02
L3	165.100	10 3/8-4 UNS	94.425	28.575	⊔ 25.4x82.55